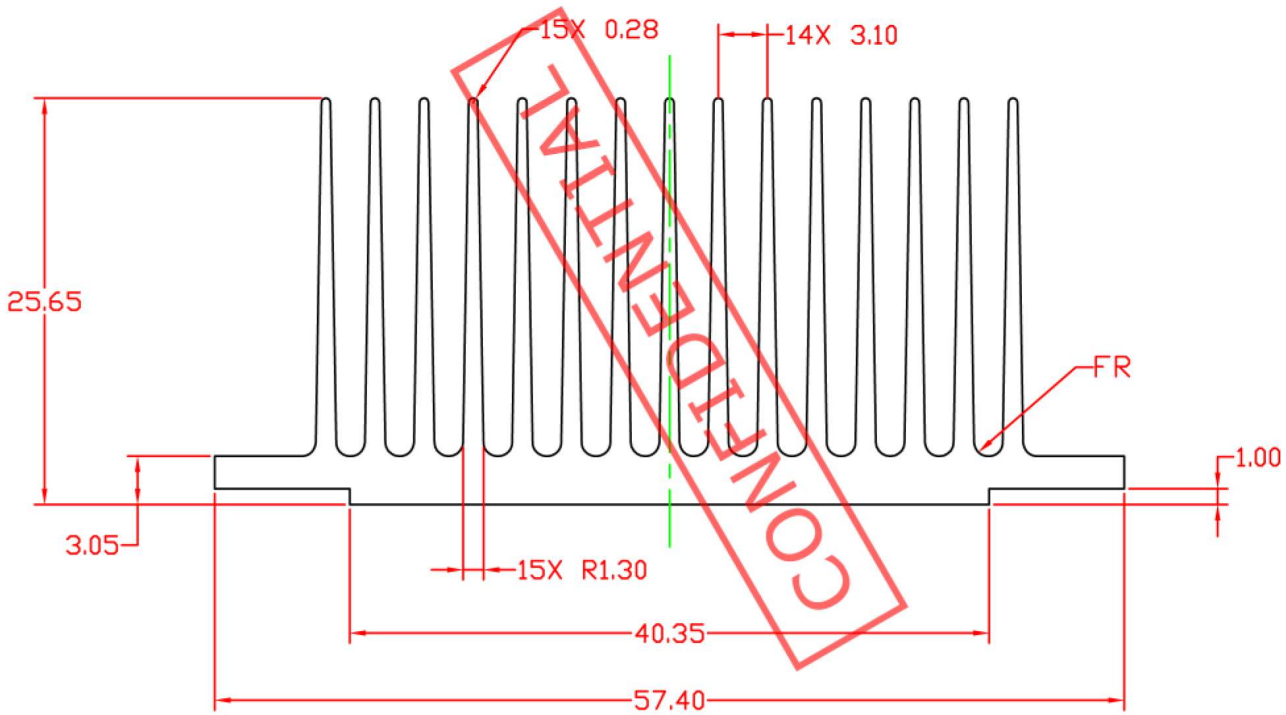


SCALE 1:1



NOTES:

1. THE SECTION AREA = 479.24mm<sup>2</sup>.
2. EXTRUSION WEIGHT : 1.308Kg/m .

TOLERANCES UNLESS NOTED (mm)		CUSTOMER P/N: -	Rev: -	 <small>Customized Thermal Solution www.alplus.us</small>	
DIMENSION	TOLERANCE	MAT'L: AL 6063-T5	FINISH: NONE	TITLE: HEATSINK EXTRUSION	
X.	±0.60	CHK :		DWG NO. E023	Rev. A
X.X	±0.40	DR : Dan NOV/09/2005		SCALE: 2:1	SHEET: 1/1
X.XX	±0.25				
ANGLES	±1°				