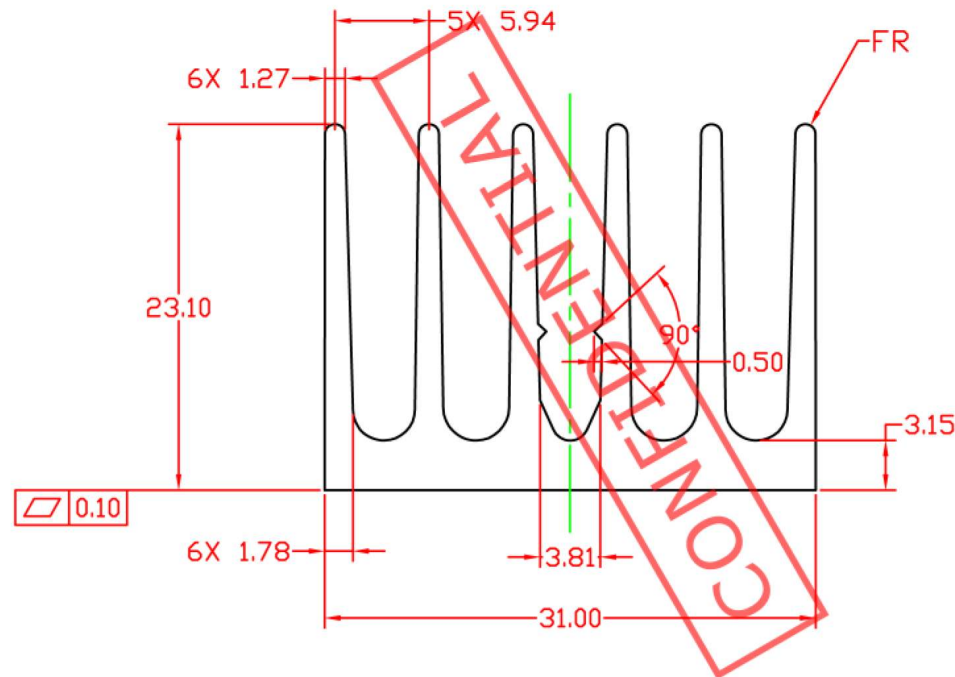



SCALE 1:1



NOTES:

1. THE SECTION AREA = 295.85mm².
2. EXTRUSION WEIGHT : 0.808Kg/m .

| | | | | | |
|------------------------------|-----------|----------------------|-----------------|---|------------|
| TOLERANCES UNLESS NOTED (mm) | | CUSTOMER P/N. - | Rev. - |  <small>Customized Thermal Solution www.alplus.us</small> | |
| DIMENSION | TOLERANCE | MAT'L: AL 6063-T5 | FINISH: NONE | TITLE: HEATSINK EXTRUSION | |
| X. | ±0.60 | CHK : | | DWG NO. E033 | Rev. A |
| X.X | ±0.40 | DR : Dan NOV/09/2005 | | SCALE: 2:1 | SHEET: 1/1 |
| X.XX | ±0.25 | | | | |
| ANGLES | ±1° | | | | |